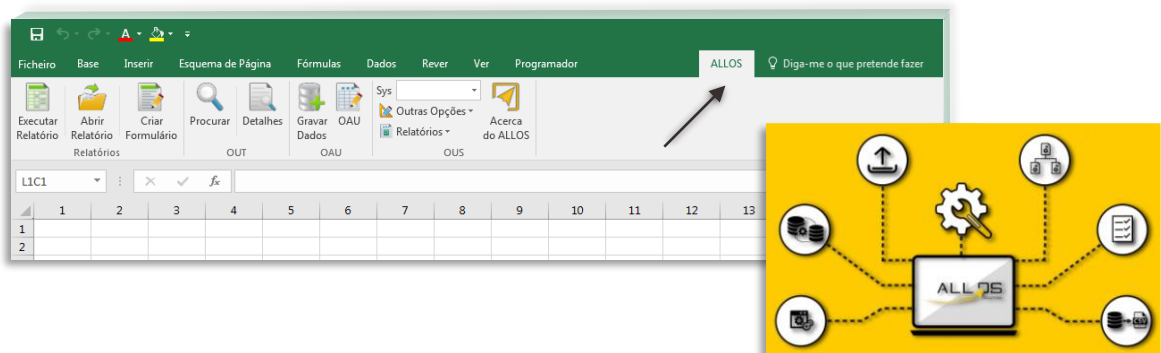


# ALLOS Formulas

## Updated system data whenever you open Excel using Allos formulas

Allos is in fact fully integrated with Excel. Thus, it is accessed directly through a tab identical to all others that are available by default in excel.



### Building formulas:

- ▶ To choose an ALLOS formula, simply insert "=" into a cell, as we would for an Excel formula, then "A" (from Allos), and a list of ALLOS formulas appears.



Allos formulas can be copied, cut or pasted just like any other Excel formula. Allos formulas can serve as a basis for charts, references in Word, references to other formulas, used in the "solver", to calculate or to trace dependencies.

All this just like any other Excel formula. Its limitations are the limitations of Excel and its possibilities are also all possibilities of Excel.

- ▶ Allos formulas are grouped into a specific category "ALLOS formulas" within the formula wizard.

# Allos formulas

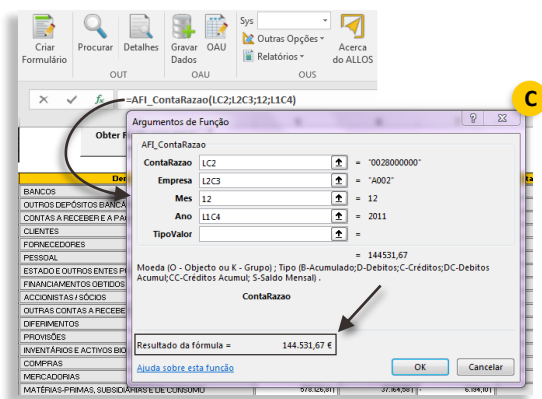
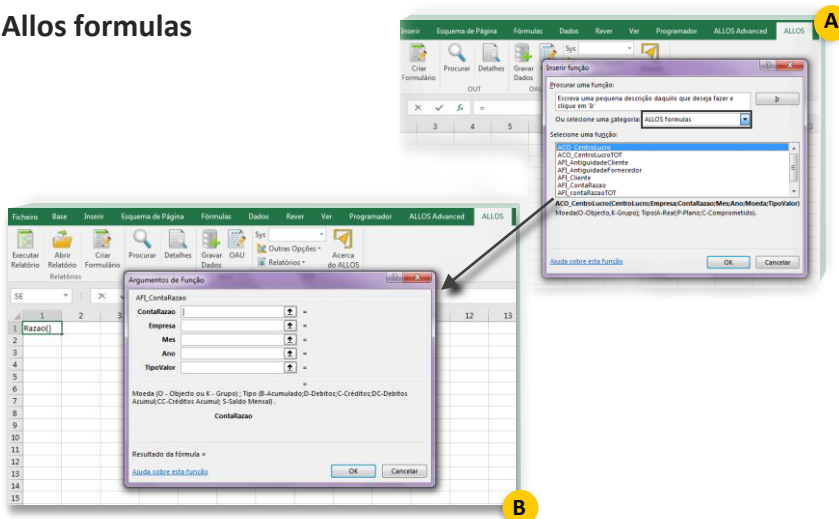
## How does it work?

Allos formulas have exactly the same configuration as Excel formulas. In case you want the Allos formula to be fixed in a cell, row or column, the special character "\$" (F4) is also used. The user can, with the same formula, fill out a report or an entire table.

In addition, since ALLOS formulas are the same as the rest of Excel formulas, we can combine several of them in the same cell, using the Excel mechanisms for validation. "IF", for instance, can be used as an auxiliary formula to avoid having cells with a zero value, # N / A or #VALUE if the formula does not produce results.

In order to verify what each of the formulas is calculating, we can select the formula symbol, *fx* to check it out.

## Allos formulas



### Third party legal notice

All product, service and company names referenced herein are the property of their respective owners. The reference to these brands, products and companies does not imply, nor does it mean, any affiliation or endorsement by them.

All specifications and functionalities may be subject to change without notice.

